



INSTALLING EXCHANGE 2013

Checklist before installing Exchange 2013 (Best practice is to install Mailbox role before CAS role):

1. Firewall disabled within domain network
2. Has static IP setup and can ping DC and other servers in the domain
3. Latest windows update
4. Windows is activated
5. Is in domain
6. Account that is going to install is member of Schema Admins, Enterprise Admins and Organization Management
7. DC (writeable)
8. File share witness server (can't be Exchange server or DC)

For other requirement check: [http://technet.microsoft.com/en-us/library/ff805042\(v=exchg.150\).aspx](http://technet.microsoft.com/en-us/library/ff805042(v=exchg.150).aspx)

1. Open Power Shell (as administrator) and run following command :

Install-WindowsFeature RSAT-ADDS

```
Windows PowerShell
Copyright (C) 2012 Microsoft Corporation. All rights reserved.

PS C:\Windows\system32> Install-WindowsFeature RSAT-ADDS

Success Restart Needed Exit Code      Feature Result
-----
True      No                Success      {Remote Server Administration Tools, Activ...
```

2. Then Run the following command (for mailbox role):

Install-WindowsFeature AS-HTTP-Activation, Desktop-Experience, NET-Framework-45-Features, RPC-over-HTTP-proxy, RSAT-Clustering, RSAT-Clustering-CmdInterface, Web-Mgmt-Console, WAS-Process-Model, Web-Asp-Net45, Web-Basic-Auth, Web-Client-Auth, Web-Digest-Auth, Web-Dir-Browsing, Web-Dyn-Compression, Web-Http-Errors, Web-Http-Logging, Web-Http-Redirect, Web-Http-Tracing, Web-ISAPI-Ext, Web-ISAPI-Filter, Web-Lgcy-Mgmt-Console, Web-Metabase, Web-Mgmt-Console, Web-Mgmt-Service, Web-Net-Ext45, Web-Request-Monitor, Web-Server, Web-Stat-Compression, Web-Static-Content, Web-Windows-Auth, Web-WMI, Windows-Identity-Foundation

```
PS C:\Windows\system32> Install-WindowsFeature AS-HTTP-Activation, Desktop-Experience, NET-Framework-45-Features, RPC-over-HTTP-proxy, RSAT-Clustering, RSAT-Clustering-CmdInterface, Web-Mgmt-Console, WAS-Process-Model, Web-Asp-Net45, Web-Basic-Auth, Web-Client-Auth, Web-Digest-Auth, Web-Dir-Browsing, Web-Dyn-Compression, Web-Http-Errors, Web-Http-Logging, Web-Http-Redirect, Web-Http-Tracing, Web-ISAPI-Ext, Web-ISAPI-Filter, Web-Lgcy-Mgmt-Console, Web-Metabase, Web-Mgmt-Console, Web-Mgmt-Service, Web-Net-Ext45, Web-Request-Monitor, Web-Server, Web-Stat-Compression, Web-Static-Content, Web-Windows-Auth, Web-WMI, Windows-Identity-Foundation

Success Restart Needed Exit Code      Feature Result
-----
True      Yes                SuccessRest... {Application Server, HTTP Activation, .NET...}
WARNING: You must restart this server to finish the installation process.
```

Reboot

(For CAS role)

Install-WindowsFeature AS-HTTP-Activation, Desktop-Experience, NET-Framework-45-Features, RPC-over-HTTP-proxy, RSAT-Clustering, Web-Mgmt-Console, WAS-Process-Model, Web-Asp-Net45, Web-Basic-Auth, Web-Client-Auth, Web-Digest-Auth, Web-Dir-Browsing, Web-Dyn-Compression, Web-Http-Errors, Web-Http-Logging, Web-Http-Redirect, Web-Http-Tracing, Web-ISAPI-Ext, Web-ISAPI-Filter, Web-Lgcy-Mgmt-Console, Web-Metabase, Web-Mgmt-Console, Web-Mgmt-Service, Web-Net-Ext45, Web-Request-Monitor, Web-Server,

Web-Stat-Compression, Web-Static-Content, Web-Windows-Auth, Web-WMI, Windows-Identity-Foundation

3. Download and extract Exchange 2013 (CU3) to a folder on your local drive:

<http://www.microsoft.com/en-us/download/details.aspx?id=41175>

I extracted mine to C:/Exchange 2013/

4. Install the following software in this order.

[Unified Communications Managed API 4.0 Runtime](#)

[Microsoft Office 2010 Filter Pack 64 bit](#)

[Microsoft Office 2010 Filter Pack SP1 64 bit](#)

5. Run setup.exe as administrator from extracted folder:

MICROSOFT EXCHANGE SERVER 2013 CUMULATIVE UPDATE 2 SETUP

? X

Check for Updates?

You can have Setup download Exchange Server 2013 updates from the Internet before you install Exchange. If updates are available, they'll be downloaded and used by Setup. By downloading updates now, you'll have the latest security and product updates. If you don't want to check for updates right now, or if you don't have access to the Internet, skip this step. If you skip this step, be sure to download and install any available updates after you've completed Setup.

Select one of the following options:

- ☒ Connect to the Internet and check for updates
- ☐ Don't check for updates right now

 Exchange

next

Click next and next again if no update found

MICROSOFT EXCHANGE SERVER 2013 CUMULATIVE UPDATE 2 SETUP

? X

Downloading Updates...

0%

No updates found, click next to continue with setup.



next

Click next

MICROSOFT EXCHANGE SERVER 2013 CUMULATIVE UPDATE 2 SETUP

? X

Introduction

Welcome to Microsoft Exchange Server 2013!

Exchange Server is designed to help you increase user productivity, keep your data safe, and provide you with the control you need. You can tailor your solution to your unique needs with flexible deployment options, including hybrid deployments that enable you to take advantage of both on-premises and online solutions. You can use compliance management features to protect against the loss of sensitive information and help with internal and regulatory compliance efforts. And, of course, your users will be able to access their email, calendar, and voice mail on virtually any device and from any location. This wizard will guide you through the installation of Exchange Server 2013.

Plan your Exchange Server 2013 deployment:

[Read about Microsoft Exchange Server 2013](#)

[Read about supported languages](#)

[Use the Exchange Server 2013 Deployment Assistant](#)



next

Accept license agreement and click next

MICROSOFT EXCHANGE SERVER 2013 CUMULATIVE UPDATE 2 SETUP

Print ? X

License Agreement

Please read and accept the Exchange Server 2013 license agreement.

MICROSOFT SOFTWARE LICENSE TERMS

MICROSOFT EXCHANGE SERVER 2013 STANDARD, ENTERPRISE, TRIAL AND HYBRID

These license terms are an agreement between Microsoft Corporation (or based on where you live, one of its affiliates) and you. Please read them. They apply to the software named above, which includes the media on which you received it, if any. The terms also apply to any Microsoft

- updates,
- supplements,
- Internet-based services, and
- support services

for this software, unless other terms accompany those items. If so, those terms apply.

By using the software, you accept these terms. If you do not accept them, do not use the software. Instead, return it to the retailer for a refund or credit. If you cannot obtain a refund there, contact Microsoft or the Microsoft affiliate service center nearest you for information about Microsoft refund policies. See

- ☒ I accept the terms in the license agreement
- ☐ I do not accept the terms in the license agreement.



next

Choose use recommended settings or dont

MICROSOFT EXCHANGE SERVER 2013 CUMULATIVE UPDATE 2 SETUP

? X

Recommended Settings

☒ Use recommended settings

Exchange server will automatically check online for solutions when encountering errors and provide usage feedback to Microsoft to help improve future Exchange features.

☐ Don't use recommended settings

Manually configure these settings after installation is complete (see help for more information).

[Read more about providing usage feedback to Microsoft](#)

[Read more about checking for error solutions online](#)



back

next

Since we going to install mailbox role, we thick for that option

MICROSOFT EXCHANGE SERVER 2013 CUMULATIVE UPDATE 2 SETUP

? X

Server Role Selection

Select the Exchange server roles you want to install on this computer:

☒ Mailbox role

☐ Client Access role

☒ Management tools

☒ Automatically install Windows Server roles and features that are required to install Exchange Server



back

next

Click next

MICROSOFT EXCHANGE SERVER 2013 CUMULATIVE UPDATE 2 SETUP

? X

Installation Space and Location

Disk space required: 6558 MB

Disk space available: 27212,9 MB

Specify the path for the Exchange Server installation:

C:\Program Files\Microsoft\Exchange Server\V15

browse



back

next

Leave default and click next

MICROSOFT EXCHANGE SERVER 2013 CUMULATIVE UPDATE 2 SETUP

? X

Malware Protection Settings

Malware scanning helps protect your messaging environment by detecting messages that may contain viruses or spyware. It can be turned off, replaced, or paired with other premium services for layered protection.

Malware scanning is enabled by default. However, you can disable it if you're using another product for malware scanning. If you choose to disable malware scanning now, you can enable it at any point after you've installed Exchange.

Disable malware scanning.

☐ Yes

☒ No

Internet access is required to download the latest anti-malware engine and definition updates.



back

next

Ready to install

MICROSOFT EXCHANGE SERVER 2013 CUMULATIVE UPDATE 2 SETUP

? X

Readiness Checks

The computer will be checked to verify that setup can continue.

Prerequisite Analysis

100%

Warning:
Setup will prepare the organization for Exchange 2013 by using 'Setup /PrepareAD'. No Exchange 2007 server roles have been detected in this topology. After this operation, you will not be able to install any Exchange 2007 servers.
For more information, visit: [http://technet.microsoft.com/library\(EXCHG.150\)/ms.exch.setupreadiness.NoE12ServerWarning.aspx](http://technet.microsoft.com/library(EXCHG.150)/ms.exch.setupreadiness.NoE12ServerWarning.aspx)



install

And we wait...

MICROSOFT EXCHANGE SERVER 2013 CUMULATIVE UPDATE 2 SETUP

? X

Setup Progress

Step 3 of 13: Copy Exchange Files

90%



We are done!

MICROSOFT EXCHANGE SERVER 2013 CUMULATIVE UPDATE 2 SETUP

? X

Setup Completed

Congratulations! Setup has finished successfully. To complete the installation of Exchange Server 2013, reboot the computer.

You can view additional post-installation tasks online by clicking the link: <http://go.microsoft.com/fwlink/p/?LinkId=255372>.



finish

Reboot.

To install 2nd Mailbox server, do same steps!

To install CAS role, do same steps as above but under Role selection choose CAS server role!

Configuring Exchange 2013

For us to be able to login to ECP on Exchange 2013, we need to create account on the new server(no need if the account used to install didn't have any mailbox, cause then mailbox will be created by default).

On any of Exchange 2013 server, start Exchange management shell and run following command:

"Get-mailboxdatabase" so we can see the name of the new databases.

```
[PS] C:\Windows\system32>get-mailboxdatabase
```

Name	Server	Recovery	ReplicationType
Mailbox Database 0662977193	DAG03	False	None
Mailbox Database 0064668652	DAG04	False	None

Then run the following command to create new mailbox in the new database:

"New-Mailbox -name Newadmin -userPrincipalName Newadmin@itlab.as -Database "Mailbox Database 0662977193"

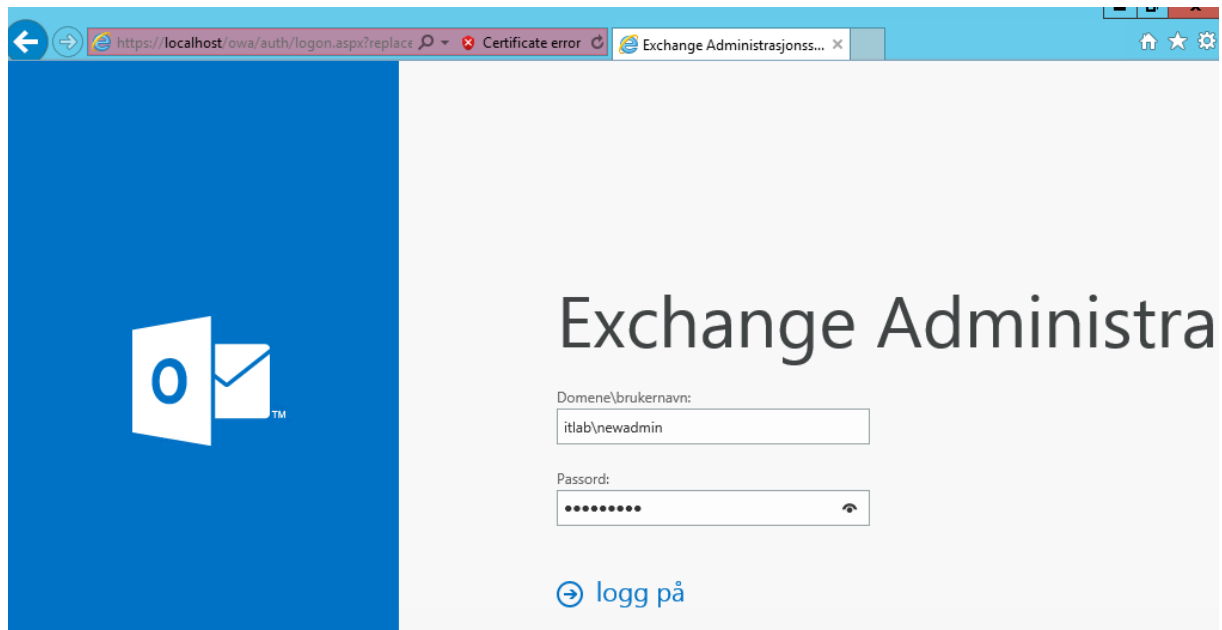
```
[PS] C:\Windows\system32>New-Mailbox -name Newadmin -userPrincipalName Newadmin@itlab.as -Database "Mailbox Database 0662977193"
WARNING: A script or application on the EXCHANGE02.ITLAB.AS remote computer is sending a prompt request. When prompted,
enter sensitive information such as credentials or password only if you trust the remote computer and the application
or script requesting it.

cmdlet New-Mailbox at command pipeline position 1
Supply values for the following parameters:
Password: *****
```

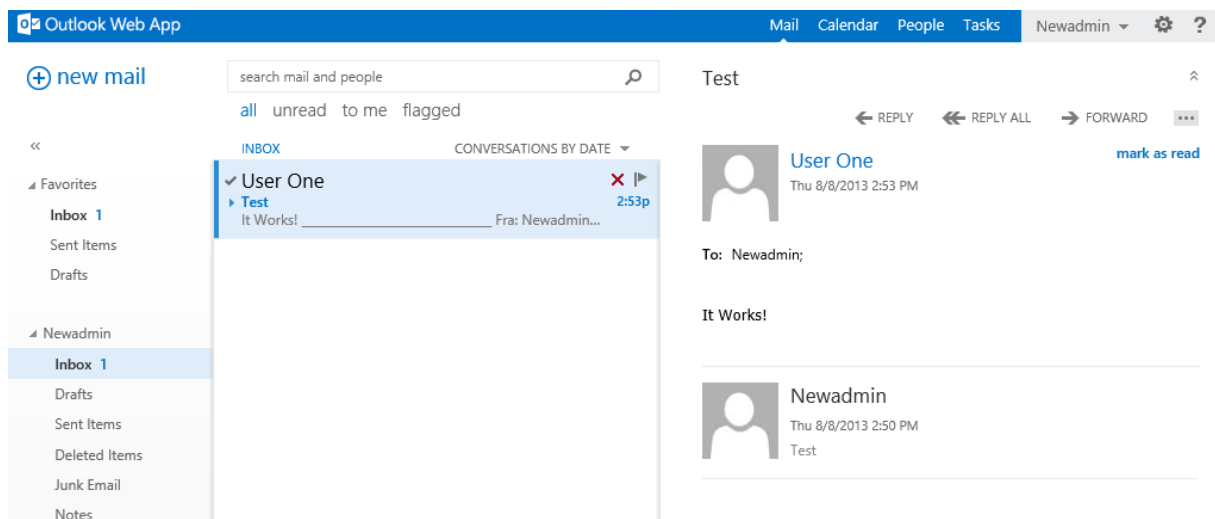
Give new account a password add new account to following member groups:

- Domain Admins
- Schema Admins
- Enterprise Admins
- Organization Management

Login to ecp with the following link: <https://localhost/ecp> (works only on CAS server)



Login to OWA with the new account and test mail workflow. Send e-mail to another user (they must have mailbox first)



Create new Databases

Now we are going to create new database for each of the Mailbox servers

In ECP navigate to Servers – Databases and click on + sign

Exchange admin center

recipients

permissions

compliance management

organization

protection

mail flow

mobile





public folders

unified messaging

servers

hybrid

serversdatabasesdatabase availability groupsvirtual directoriescertificates

+...

NAME ▲	ACTIVE ON...	SERVICES WITH COPIES	STA...	BAD COPY C...	
DB01	DAG02	DAG01,DAG02	Mo...	0	
DB02	DAG02	DAG02,DAG01	Mo...	0	
Mailbox Datab...	DAG04	DAG04	Mo...	0	
Mailbox Datab...	DAG03	DAG03	Mo...	0	

*(DB01 and DB02 is database on my old Exchange server, so don't mind those)

Before doing this, make sure you have created disk on both Mailbox servers and their drive letter have to be the same.

Give Mailbox database a name – Choose which mailbox server it will be stored at and location for Log folder, then click save.

new database

[Help](#)

*Mailbox database

DB03

*Server

DAG03



browse...

Database file path:

E:\DB03\DB03.edb

Log folder path:

G:\Log03\



☒ Mount this database

This field displays the default path to the log folder. You can change the location by entering a new path.

save

cancel

Klikk OK and restart Microsoft Exchange Information Store service

*Mailbox database

DB03

*Server

DAG03

Database

Log folder

☒ Mount this database

warning

Please restart the Microsoft Exchange Information Store service on server DAG03 after adding new mailbox databases.

ok

Do the same for 2nd database, but this time choose 2nd Mailbox server as default storage

new database

[Help](#)

*Mailbox database

DB04

*Server

DAG04 X browse...

Database file path:

F:\DB04\DB04.edb

Log folder path:

G:\Log04 X

☒ Mount this database

This field displays the default path to the log folder. You can change the location by entering a new path.

Save – OK and restart Microsoft Exchange Information Store service

Move arbitration mailboxes and remove default mailbox databases

After creating new mailbox databases we are going to remove default ones. This is how our mailbox databases look like: We are going to remove those with name **Mailbox Database..**

Exchange admin center

recipients
permissions
compliance management
organization
protection
mail flow
mobile
public folders
unified messaging
servers
hybrid

servers **databases** database availability groups virtual directories certificates

+ ✎ 🗑️ 🔍 🔄 ...

NAME	ACTIVE...	SERVICES WITH COPIES	STA...	BAD COPY C...	
DB01	DAG02	DAG01,DAG02	Mo...	0	DB04 Servers DAG04 Database copies DB04\DAG04 Active Mounted Copy queue length: 0 Content index state: Unknown View details
DB02	DAG02	DAG02,DAG01	Mo...	0	
DB03	DAG03	DAG03	Mo...	0	
DB04	DAG04	DAG04	Mo...	0	
Mailbox Database ...	DAG04	DAG04	Mo...	0	
Mailbox Database ...	DAG03	DAG03	Mo...	0	

In EMC run the following command:

Get-mailbox -arbitration

```
[PS] C:\Windows\system32>Get-Mailbox -arbitration
```

Name	Alias	ServerName	ProhibitSendQuota
SystemMailbox<1f05a927...	SystemMailbox<1f0...	dag01	Unlimited
SystemMailbox<e0dc1c29...	SystemMailbox<e0d...	dag01	Unlimited
FederatedEmail.4c1f4d8...	FederatedEmail.4c...	dag01	1 MB <1,048,576 bytes>
SystemMailbox<bb558c35...	SystemMailbox<bb5...	dag03	Unlimited
Migration.8f3e7716-201...	Migration.8f3e771...	dag03	300 MB <314,572,800 bytes>

As we can see there are total of 5 arbitration mailboxes, 2 are in the new Mailbox server. Its these two we want to move to the new database we just created.

Run the following command in EMC:

Get-mailboxdatabase

```
[PS] C:\Windows\system32>get-mailboxdatabase
```

Name	Server	Recovery	ReplicationType
Mailbox Database 0662977193	DAG03	False	None
Mailbox Database 0064668652	DAG04	False	None
DB03	DAG03	False	None
DB04	DAG04	False	None

As we can see arbitration mailboxes are on Mailbox Database 0662977193.Run the following command in EMC to move arbitration mailboxes:

Get-mailbox -database "Mailbox Database 0662977193" -arbitration | new-moverequest -targetdatabase "DB03"

```
[PS] C:\Windows\system32>get-mailbox -database "Mailbox Database 0662977193" -arbitration | new-moverequest -targetdatabase "DB03"
```

DisplayName	StatusDetail	TotalMailboxSize	TotalArchiveSize	PercentComplete
Microsoft Exchange	Queued	4.348 KB <4,452 bytes>		0
Microsoft Exchange Mig...	Queued	2.207 KB <2,260 bytes>		0

Get-moverequest to get status

```
[PS] C:\Windows\system32>Get-MoveRequest
```

DisplayName	Status	TargetDatabase
Microsoft Exchange	Completed	DB03
Microsoft Exchange Migration	Completed	DB03

When status is Completed then moverequest is done. Run following command to remove completed moverequest:

Get-MoveRequest -MoveStatus Completed | Remove-MoveRequest

```
[PS] C:\Windows\system32>Get-MoveRequest -movestatus completed !Remove-MoveRequest
```

Confirm
Are you sure you want to perform this action?
Removing completed move request "Newadmin".
[Y] Yes [A] Yes to All [N] No [L] No to All [?] Help (default is "Y"):

Press A to confirm

To be sure that mailbox database is empty, run the following command in EMC

Get-mailbox -database "Mailbox Database 0662977193"

```
[PS] C:\Windows\system32>get-mailbox -database "Mailbox Database 0662977193"
```

Name	Alias	ServerName	ProhibitSendQuota
Newadmin	Newadmin	dag03	Unlimited

As we can see, we still have 1 mailbox left. Now we do another move request with the following command:

Get-mailbox -database "Mailbox Database 0662977193" | new-moverequest -targetdatabase "DB03"

```
[PS] C:\Windows\system32>get-mailbox -database "Mailbox Database 0662977193" ! new-moverequest -targetdatabase "DB03"
```

DisplayName	StatusDetail	TotalMailboxSize	TotalArchiveSize	PercentComplete
Newadmin	Queued	62.11 KB (63,597 bytes)		0

Get-moverequest to get status, when status is completed, run Get-MoveRequest -MoveStatus Completed | Remove-MoveRequest

Now we are ready to delete default databases. Login to ECP – servers – Databases

Exchange admin center

recipientspermissionscompliance managementorganizationprotectionmail flowmobilepublic foldersunified messagingservershybrid

serversdatabasesdatabase availability groupsvirtual directoriescertificates

+✎🗑🔍🔄⋮

NAME	ACTIVE...	SERVICES WITH COPIES	STA...	BAD COPY C...	
DB01	DAG02	DAG01,DAG02	Mo...	0	Mailbox Database 0064668652 Servers DAG04 Database copies Mailbox Database 0064668652\DAG04 Active Mounted Copy queue length: 0 Content index state: Healthy View details
DB02	DAG02	DAG02,DAG01	Mo...	0	
DB03	DAG03	DAG03	Mo...	0	
DB04	DAG04	DAG04	Mo...	0	
Mailbox Databas...	DAG04	DAG04	Mo...	0	
Mailbox Database ...	DAG03	DAG03	Mo...	0	

Mark on those you want to delete and click on trash can icon. Click yes to confirm

warning

Are you sure you want to delete "Mailbox Database 0064668652"?

yes

no

Error error!

warning

Failed to remove monitoring mailbox object of database "Mailbox Database 0064668652". Exception: Active Directory operation failed on DC01.ITLab.as. This error is not retrievable. Additional information: Access is denied. Active directory response: 00000005: SecErr: DSID-031520C3, problem 4003 (INSUFF_ACCESS_RIGHTS), data 0 .

The specified database has been removed. You must remove the database file located in C:\Program Files\Microsoft\Exchange Server\V15\Mailbox\Mailbox Database 0064668652\Mailbox Database 0064668652.edb from your computer manually if it exists. Specified database: Mailbox Database 0064668652



ok

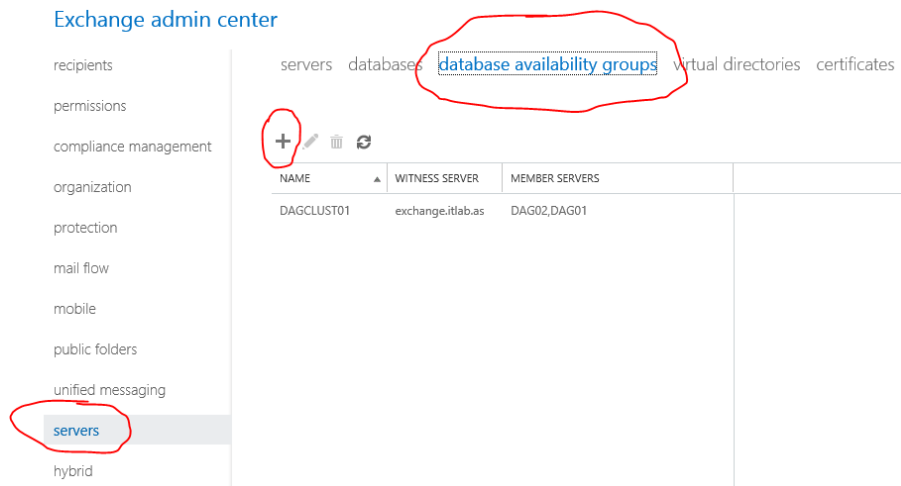
Don't worry, error message says it was able to remove database, but we have to manually remove files and folders. Log in to mailbox server and delete all files in that folder:

Normally its under C:\Program Files\Microsoft\Exchange Server\V15\Mailbox\Mailbox Database name

Do the same for the remaining database.

Creating Database availability group

In ECP navigate to servers – database availability group and click on + sign



Enter the following details for the new Database Availability Group:

- **DAG name** – this should match the CNO you pre-staged earlier
- **Witness server** – this is required for all DAGs, even those that have an odd number of members and hence run in node majority quorum mode
- **Witness directory** – this is optional. If you do not specify a directory Exchange will choose one for you.
- **IP address** – the DAG requires an IP address on each IP subnet that is part of the MAPI network. If you do not specify IP addresses the DAG will use DHCP instead.

The screenshot shows the 'new database availability group' form in a Windows Internet Explorer browser window. The form contains the following fields:

- *Database availability group name: DAGCLUST02
- Witness server: Exchange02.itlab.as
- Witness directory: CAFSW
- Database availability group IP addresses: (empty field with a '+' icon)

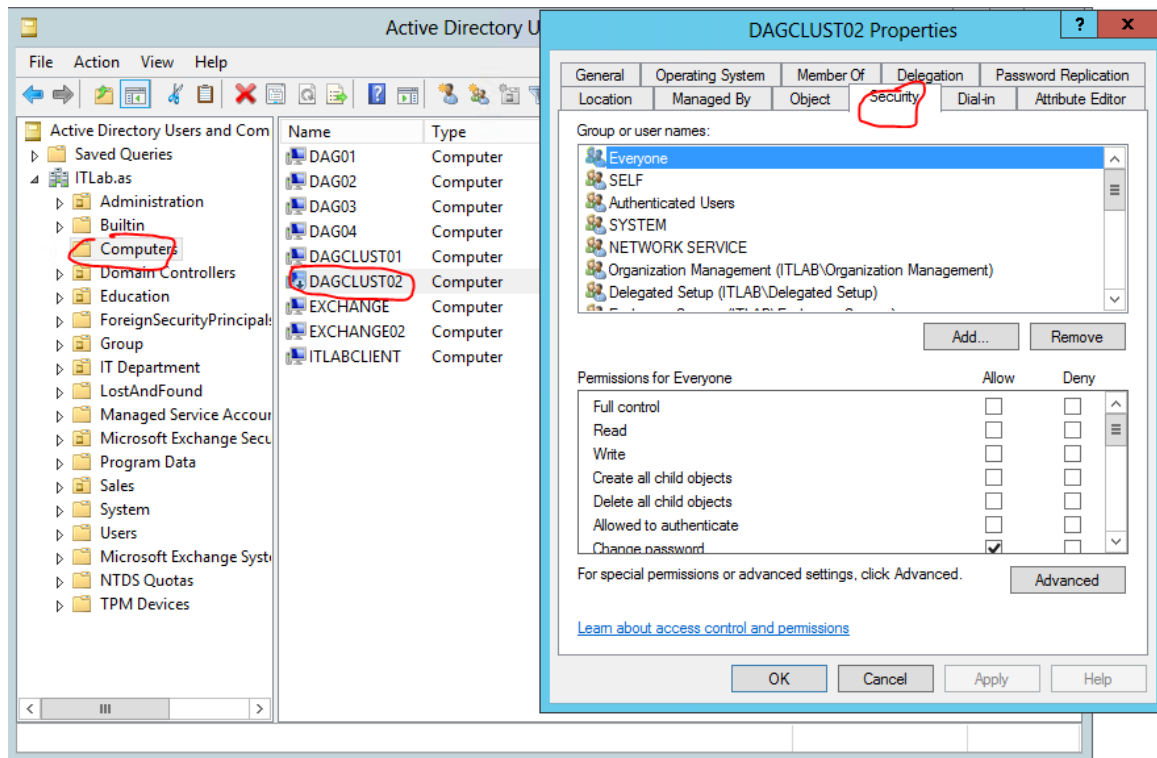
A tooltip message is displayed on the right side of the form, stating: "A DAG must either be assigned one or more static IP addresses or be configured to use Dynamic Host Configuration Protocol (DHCP). Use this field to configure IPv4 addresses for the DAG." Below the tooltip is a "Learn more" link.

At the bottom of the form are "save" and "cancel" buttons.

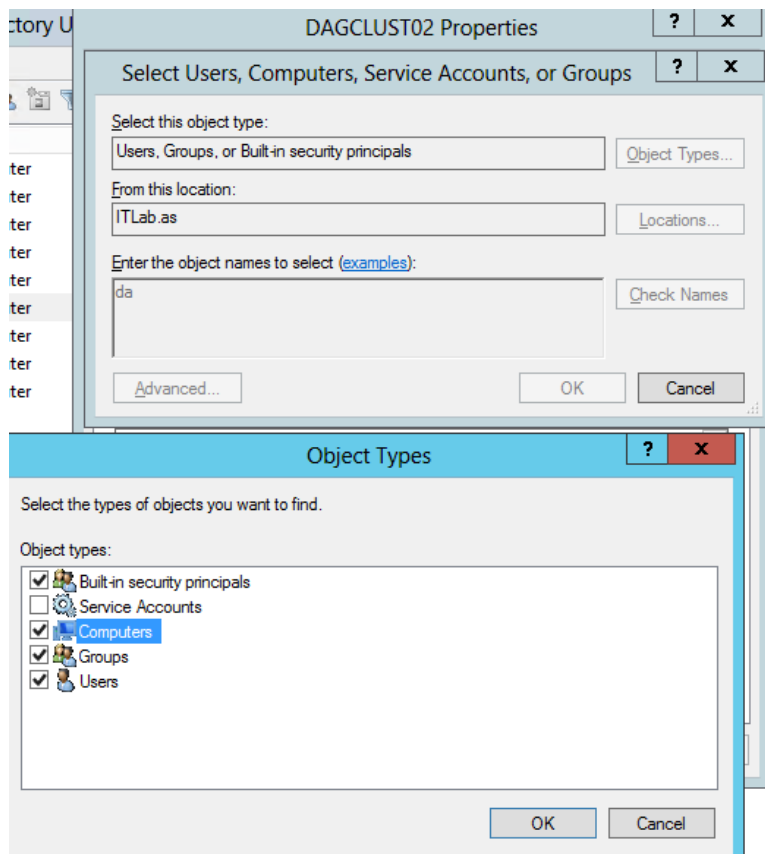
Go to Active Directory users and computers.

Click view – advanced features

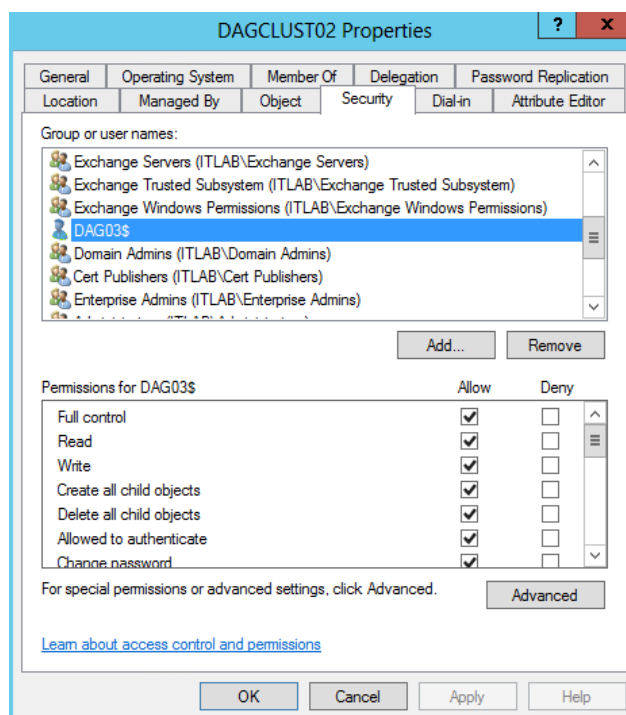
Click on computer container and get properties of the new Database availability group we just created:



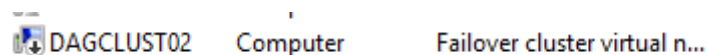
Next, grant the computer account for the first DAG member Full Control permissions for the CNO computer account. In my case DAG03, but first click object types and tick for computers:



Then add computer and grant it full control.



Now disable the new Database availability group we just created



Adding Database Availability Group Members

After the DAG has been created it still does not contain any actual members. These need to be added next.

Highlight the new Database Availability Group and click the icon to manage DAG membership.

Exchange admin center

recipients
permissions
compliance management
organization
protection
mail flow
mobile
public folders
unified messaging
servers
hybrid

servers databases **database availability groups** virtual directories certificates

+ ✎ 🗑️ 📄 🔄

NAME	WITNESS SERVER	MEMBER SERVERS
DAGCLUST01	exchange.itlab.as	DAG02,DAG01
DAGCLUST02	exchange02.itla...	

DAGCLUST02
Witness Server
exchange02.itlab.as

Manage Database Availability Group Membership - Windo... New

manage database avail

Add or remove servers

+ -

MEMBER SERVERS

NAME VERSION DATABASE...

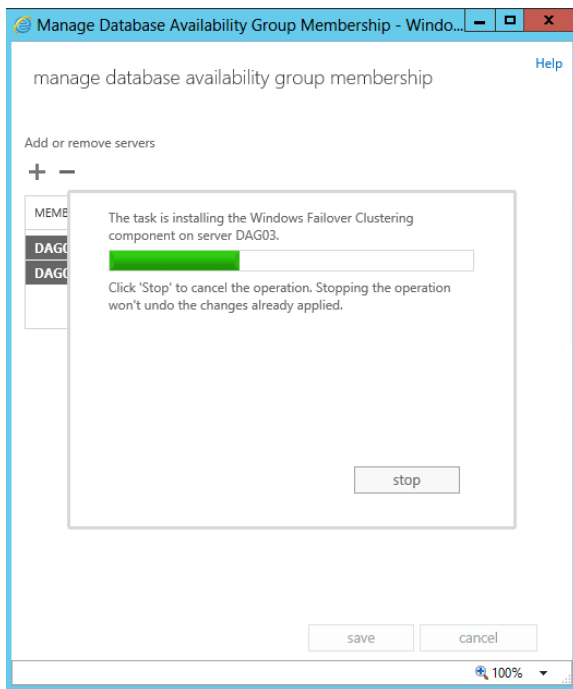
DAG03	Version 15.0 (Build 712.24)	
DAG04	Version 15.0 (Build 712.24)	

2 selected of 2 total

add -> DAG03[remove]; DAG04[remove];

ok cancel

Click ok and save



Result will look like this

+ ✎ 🗑️ 📄 ⚙️ ↺		
NAME	WITNESS SERVER	MEMBER SERVERS
DAGCLUST01	exchange.itlab.as	DAG02,DAG01
DAGCLUST02	exchange02.itla...	DAG04,DAG03

*Dagclust01 is DAG of my Exchange 2010 environment, so don't mind it 😊

Configuring database copies

In ECP navigate to servers – databases mark database you want to create copy then ... icon and choose add database copy:

servers **databases** database availability groups virtual dir

+ ✎ 🗑️ 🔍 ↺ ...					
NAME	▲	A	IES	STA...	BAD COPY C...
DB01		D		Mo...	0
DB02		DAG02	DAG02,DAG01	Mo...	0
DB03		DAG03	DAG03	Mo...	0
DB04		DAG04	DAG04	Mo...	0

Click browse then mark the database and click ok then save

add mailbox database copy [Help](#)

Mailbox database name:
DB03

*Specify Mailbox server:
 [browse...](#)

Activation preference number:
2

Servers hosting a copy of this database:
DAG03

Select Server - Windows Internet Explorer

NAME	VERSION	DATABASE...
DAG04	Version 15.0 (Build 712.24)	DAGCLUS...

ok cancel

Use this field to select the DAG member on which you want to add the new database copy. Click browse..., select the server that will host the copy from list, and click OK.

save cancel

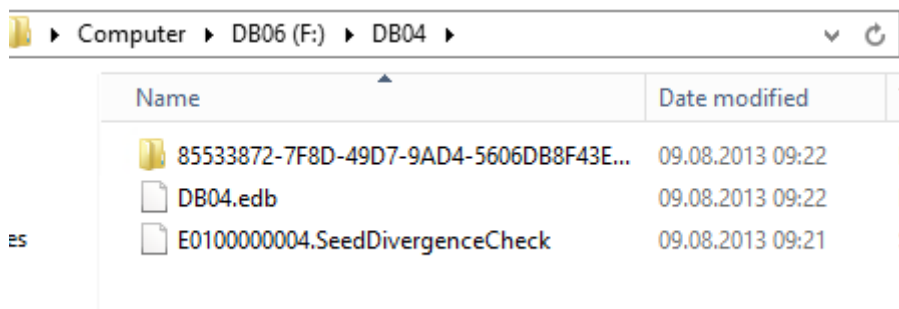
Do the same for the second database and result will look like this.

servers **databases** database availability groups virtual dir



NAME	ACTIVE...	SERVICES WITH COPIES	STA...	BAD COPY C...
DB01	DAG02	DAG01,DAG02	Mo...	0
DB02	DAG02	DAG02,DAG01	Mo...	0
DB03	DAG03	DAG03,DAG04	Mo...	0
DB04	DAG04	DAG04,DAG03	Mo...	0

To confirm that copy was successful go first to DAG03 (in this case name of my first DAG server).Browse computer



In my case the copy is in drive F: and DB04 folder

To see that all is well, in ECP navigate to Servers – Databases – mark on one of databases and on the right side you should see status for Passive and Active :

Passive Healthy
Copy queue length: 0
Content index state: Healthy
[Suspend](#) | [Activate](#) | [Remove](#)

Active Mounted
Copy queue length: 0
Content index state: Healthy

We are done!

Hope this doc was helpful!

Other info you might need to check:

Create send connector (for sending e-mails to the internet):

[http://technet.microsoft.com/en-us/library/jj657457\(v=exchg.150\).aspx](http://technet.microsoft.com/en-us/library/jj657457(v=exchg.150).aspx)

<http://exchangeserverpro.com/configuring-outbound-mail-flow-in-exchange-server-2013/>

Create Certificate:

<http://exchangeserverpro.com/create-ssl-certificate-request-exchange-2013/>